



SIKAFLOOR RESIN FLOORING SOLUTIONS

BUILDING TRUST





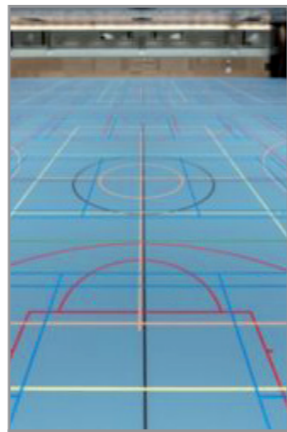
INDUSTRIAL FLOOR COATING



DECORATIVE FLOOR COATING



CAR PARK AND TRAFFIC COATING



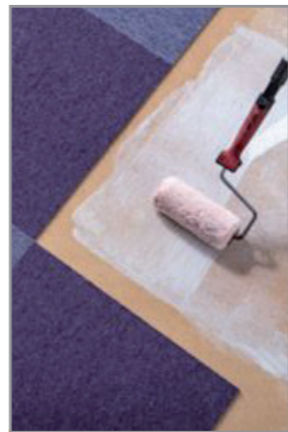
SPORTS FLOORING



CONCRETE FLOORING



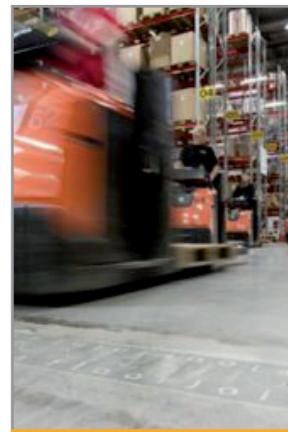
WOOD FLOOR INSTALLATION



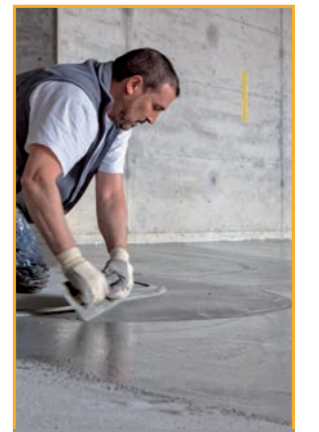
FLOOR COVERING ADHESIVES



TILE SETTING SYSTEMS



FLOOR JOINTS



PRIMERS, SCREEDS AND LEVELLERS

SPECIALISTS IN FLOORING SYSTEMS

SIKA IS A LEADING SUPPLIER OF INDUSTRIAL AND COMMERCIAL RESIN FLOORING. WE BELIEVE IN OFFERING OUR CUSTOMERS A RANGE OF PROBLEM-SOLVING FLOOR SOLUTIONS THAT CATER TO A WIDE RANGE OF INDUSTRIAL AND COMMERCIAL SETTINGS, INCLUDING:

- ▶ FOOD PREPARATION AND PROCESSING
- ▶ MECHANICAL WORKSHOPS
- ▶ PHARMACEUTICAL
- ▶ STORAGE AND LOGISTICS AREAS
- ▶ AVIATION HANGARS
- ▶ DEFENCE INDUSTRY
- ▶ BATTERY-CHARGING AREAS
- ▶ TIGHT TOLERANCE AREAS
- ▶ CHEMICAL MANUFACTURING AND STORAGE
- ▶ GENERAL MANUFACTURING AND ASSEMBLY LINE
- ▶ HOSPITALS
- ▶ CLEAN ROOMS
- ▶ WET AND DRY AREAS
- ▶ CAR PARKS



Use QR code to reference our local projects www.sika.com.au

WHAT WE DO

BUILDING TRUST

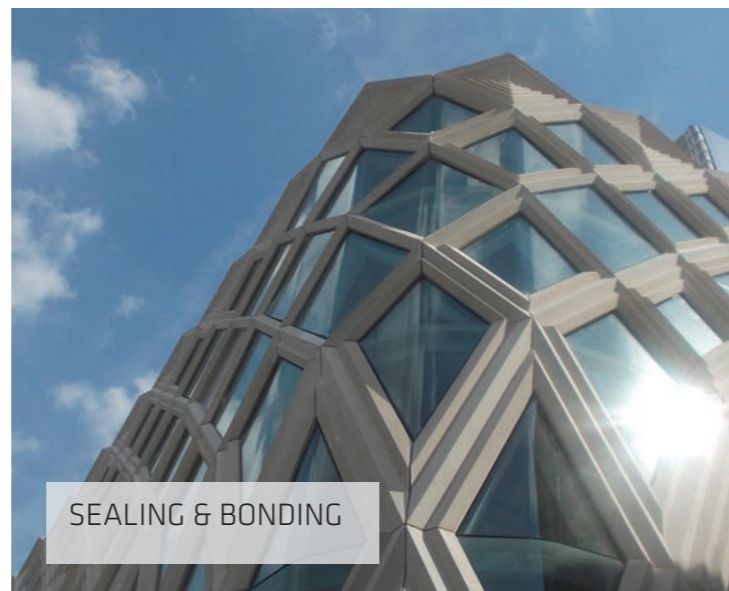
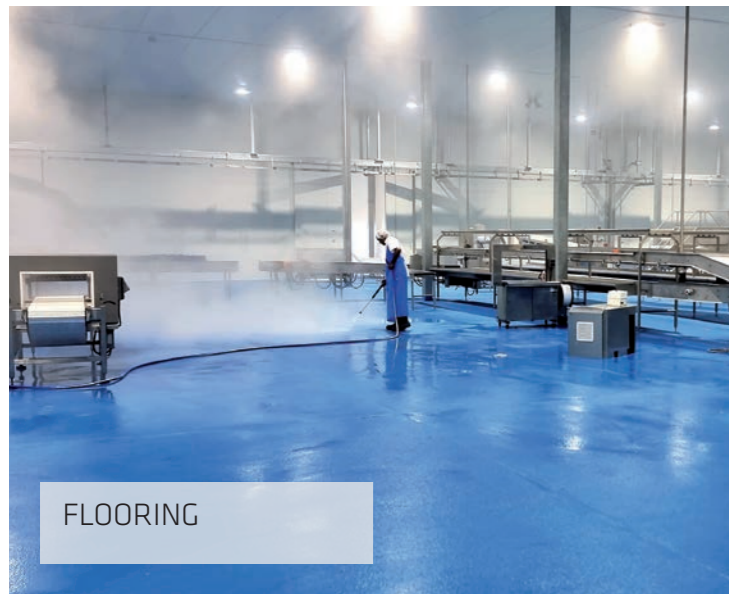


MORE THAN 100 YEARS OF EXPERTISE

Sika's reputation for quality and reliability is virtually unmatched, and is illustrated through a comprehensive portfolio of problem solving products that have been employed for many years in a diverse range of applications. Whether we are waterproofing your basement or your roof, sealing your skyscraper or your car, or working with you on your house or your multi-storey building, you will see why we are renowned for Building Trust.

SIKA HAS THE SOLUTION

As global market leader in construction chemical and industry sectors, Sika continuously leverages new growth potential in all its markets through innovation, quality and service. It provides its customers with innovative solutions that boost the efficiency, durability and aesthetic appeal of buildings, infrastructure facilities, installations and vehicles throughout production and use. The fully integrated concepts offered by Sika address the entire life cycle of a facility, from initial construction up to the point in time when repair, refurbishment or extension become necessary. The lengthening of a facility's service life, through appropriate maintenance and modernization, makes both economic and ecological sense. Sika's eight markets are:





PurCem Flooring
Products & Systems



Polyurethane Flooring
Products & Systems



Epoxy Flooring
Products & Systems



Floor Sealers
& Finishings



WHY CHOOSE SIKA RESIN FLOORING?

Sika is a leading supplier of industrial and commercial resin flooring. We believe in offering our customers a range of problem-solving floor solutions that cater to a wide range of industrial and commercial settings, including:

- ▶ Food preparation and processing
- ▶ Mechanical workshops
- ▶ Pharmaceutical
- ▶ Storage and logistics areas
- ▶ Aviation hangars
- ▶ Storage solutions for defence industry
- ▶ Battery-charging areas
- ▶ Tight tolerance areas
- ▶ Chemical manufacturing and storage
- ▶ General manufacturing and assembly line
- ▶ Hospitals
- ▶ Clean rooms
- ▶ Wet and dry areas
- ▶ Defense Industry
- ▶ Car Parks

Our resin flooring solutions have undergone rigorous testing for quality, safety, hygiene, and performance to ensure that our surfaces go the distance.

- ▶ Low maintenance
- ▶ Anti-slip surfacing
- ▶ Durable
- ▶ Chemical resistant
- ▶ UV stability for external zones
- ▶ Range of colours available

Due to the varying conditions of working environments across industries, each of our resin-based flooring products comprises different technologies to ensure that our customers get the best solutions for their needs.

SIKAFLOOR® PRIMERS



PRODUCT	Sikafloor® 158 W Fast Barrier Water based epoxy	Sikafloor® 161 Solvent free epoxy primer	Sikafloor® 160 Solvent free epoxy primer
DESCRIPTION	Rapid-drying hydrostatic moisture & incontinence barrier	2-part epoxy primer, intermediate layer - Moisture tolerant to 6% pbw	2-part epoxy primer, levelling mortar, intermediate layer and mortar screed
CHARACTERISTICS	<ul style="list-style-type: none"> ■ Suitable for green concrete ■ Rapid Cure 2 hrs at 22°C ■ Withstands 4 bar hydrostatic pressure ■ Application by squeegee/roller ■ No odour ■ Overcoatable with Sikafloor® epoxy systems 	<ul style="list-style-type: none"> ■ Capable of handling up to 6% moisture content w/w in substrate ■ Ability to be rapid cure with Sika Booster ■ Filled epoxy for higher builds and higher film ■ Excellent filling capacity when used as a scratch coat ■ Can be extended with quartz aggregate ■ Application by squeegee/roller or flat trowel 	<ul style="list-style-type: none"> ■ Excellent wetting out and penetration properties ■ Capable of handling up to 4% moisture content w/w in substrate ■ Excellent levelling capabilities ■ Excellent ability to seal concrete and minimise pin holes in subsequent layers ■ Ability to be rapid cure with Sika® Booster ■ Application by squeegee/roller
PACKAGING	Part A: 2.8 kg Part B: 1.4 kg Part A+B: 4.2 kg kit (3.9L) Part A: 12 kg Part B: 6 kg Part A+B: 18 kg kit (16.66L)	Part A: 13.09 kg containers Part B: 4.0 kg containers Part A+B: 17.09 kg ready to mix units Bulk packaging Part A: 20 kg Part B: 20 kg Part A+B Mixed to ratio as per the supplied ratio data	Part A: 7.1 kg containers Part B: 4.0 kg containers Part A+B: 11.1 kg ready to mix units Part A: 20 kg drums Part B: 20 kg drums Part A+B Mixed to ratio as per the supplied ratio data

SIKAFLOOR® SCREEDS AND MORTARS



PRODUCT	Sikafloor® 94 Solvent free epoxy	Sikafloor® 160 Solvent free epoxy	Sikafloor®-215 Rapid Screed Cement based screed
DESCRIPTION	Low viscosity, solvent free epoxy Primer and general purpose Binder resin	Epoxy binder component of resin screed	Fast-drying pre-blended engineered screed
CHARACTERISTICS	<ul style="list-style-type: none"> ■ extendable with kiln dried sand/ aggregate ■ Used for coving, skim, scratch coats and high build epoxy mortar ■ Convenient 2:1 mix ratio ■ Low viscosity ■ Ability to be rapid cure with addition of Sikafloor® Booster ■ Application by screed bar, radius/ flat trowel ■ Economical 	<ul style="list-style-type: none"> ■ extendable with kiln dried sand/ aggregate ■ Suitable for coving, skim and scratch coats and high build epoxy mortar ■ Low viscosity ■ Excellent levelling characteristics when used as scratch and skim layers ■ Ability to be rapid cure with addition of Sikafloor® Booster ■ Application by screed bar, radius/flat trowel 	<ul style="list-style-type: none"> ■ Shrinkage control ■ Fast curing -20 Mpa after 24 hrs ■ Cement based technology ■ Excellent as an economical solution for high build screed ■ High strengths of 40 Mpa ■ Good work time 20-30 mins at 23°C ■ Suitable for internal and external use (overlaid) ■ Application by screed bar and trowel
PACKAGING	Part A: 20kg Part B: 10kg Part A+B: 30kg kit Part A: 20L x2 Part B: 20Lx1 Part A+B: 60Litre kit Part A: 200kg x2 Part B: 200kg x1 Part A+B: 600kg kit	Part A: 7.1 kg containers Part B: 4.0 kg containers Part A+B: 11.1 kg ready to mix units Part A: 20 kg drums Part B: 20 kg drums Part A+B Mixed to ratio as per the supplied ratio data	20 kg Bag - 48 bags per pallet

SIKAFLOOR® SCREEDS AND MORTARS



PRODUCT	Sikafloor® PurCem 29 Coving mortar
DESCRIPTION	High strength, water-based polyurethane hybrid coving and detailing mortar
CHARACTERISTICS	<ul style="list-style-type: none"> ■ Contains blended fillers for use as a coving mortar ■ High chemical and abrasion resistance-superior to epoxy for demanding environments ■ High impact resistance ■ Fast curing ■ Taint free ■ Economical ■ Application by radius/flat trowel
PACKAGING	Part A: 1.30 kg plastic bottle Part B: 1.50 kg plastic bottle Pigment: 0.4 kg plastic tub Part C: 1.60 kg kg plastic bag Part D: 17.3 kg plastic bag Part A+B+C+D 22.0 kg ready to mix kit



SIKAFLOOR® PIGMENTED COATINGS AND LEVELLERS



PRODUCT	Sikafloor® 264 Epoxy coating	Sikafloor® 264 T AU Epoxy coating	Sikafloor® 263SL High build epoxy topping
DESCRIPTION	High build multi purpose self smoothing roller applied epoxy coating	Textured high build durable 100% solids pigmented non blooming epoxy coating	Self levelling epoxy floor for smooth and broadcast flooring systems
CHARACTERISTICS	<ul style="list-style-type: none"> ■ High abrasion resistance ■ Good chemical resistance ■ Glossy light reflective finish ■ Ability to be rapid cure in base coats with addition of Sikafloor® Booster ■ Excellent levelling and wet edge fusion ■ Suitable for heavy duty installations ■ Application by squeegee/roller 	<ul style="list-style-type: none"> ■ Good chemical and abrasion resistance ■ Can be used on Vertical surfaces ■ Formulated as a non-bloom coating when exposed to early contact with airborne moisture or water. ■ Ability to have addition of aluminium oxide to deliver high levels of slip resistance ■ Satin finish ■ Ability to be rapid cure in base coats with addition of Sikafloor® Booster ■ Application by squeegee/roller 	<ul style="list-style-type: none"> ■ Hard wearing with high compressive strengths ■ Excellent Impact resistance ■ Exceptional self-smoothing ability ■ Gloss light reflective finish ■ Ability to receive aggregate broadcast and topcoat ■ Ability to be rapid cure in base layers with addition of Sikafloor® Booster ■ Application by pin rake/trowel/spike roller
PACKAGING	Part A: 6.55 kg Part B: 2.0 kg Sikafloor Pigment 1.15 kg 1 x 1.15 kg Part A+B+Pigment: 9.7 kg ready to mix kits (7.3 L) Part A: 13.09 kg Part B: 4.0 kg Sikafloor Pigment 1.15 kg 2 x 1.15 kg Part A+B+Pigment: 19.40 kg ready to mix kits (14.6 L) Part A: 15.39 kg Part B: 4.0 kg *Pre-pigmented kits: 19.39 kg ready to mix kits (14.9 L) Part A: 20 kg bulk Part B: 20 kg bulk Part A+B Mixed to ratio as per the supplied ratio data	Part A: 6.55 kg Part B: 2.0 kg Sikafloor Pigment 1.15 kg 1 x 1.15 kg Part A+B+Pigment: 9.7 kg ready to mix kits (7.3 L) Part A: 13.09 kg Part B: 4.0 kg Sikafloor Pigment 1.15 kg 2 x 1.15 kg Part A+B+Pigment: 19.39 kg ready to mix kits (14.6 L) Part A: 15.39 kg Part B: 4.0 kg *Pre-pigmented kits: 19.39 kg ready to mix kits (14.9 L)	Part A: 13.09 kg containers Part B: 4.0 kg containers Part C: 12-15 kg* + Pigment 1.15 kg: 30.24 to 33.25 kg Total kit *Note: Total litre volume of kit can vary from 17.2 L to 18.3 L depending filler addition as stated above. Part A: 20 kg drums Part B: 20 kg drums Bulk: Available in bulk form to be measured for experienced contractors. Part A+B Mixed to ratio as per the supplied ratio data

SIKAFLOOR® PIGMENTED COATINGS AND LEVELLERS



PRODUCT	Sikafloor® 359AU Polyurethane coating	Sikafloor® 550PA Polyaspartic coating	Sikafloor® 400N Polyurethane
DESCRIPTION	Polyurethane UV stable pigmented resin coating	Abrasion and UV resistant polyaspartic resin coating	Sikafloor®-400 N Elastic is a UV resistant, highly elastic, moisture curing polyurethane waterproof membrane
CHARACTERISTICS	<ul style="list-style-type: none"> ■ UV stable -suitable for direct UV exposure externally ■ High chemical and abrasion resistance ■ Quick cure ■ Long pot life and working time ■ Low viscosity ease of application ■ Application by roller or airless spray ■ Solvent based technology 	<ul style="list-style-type: none"> ■ UV stable ■ Gloss finish ■ Rapid cure ■ Excellent scratch resistance ■ Good chemical and abrasion resistance ■ Application by squeegee/roller 	<ul style="list-style-type: none"> ■ Flexible technology and good crack bridging ability ■ Suitable for heavy pedestrian traffic loads ■ UV Stable ■ Base layer for decorative flexible flake floors ■ Ability to be used for high slip resistant floors ■ Acts as a waterproof membrane ■ Application by flat or serrated squeegee/roller
PACKAGING	Part A: 15 litres Part B: 5 litres A+B Kit (Pre-Tinted) 20 litres	Part A: 4 litres pretinted Part B: 4 litres 8 litre kits Part A: 20 litres pretinted Part B: 20 litres 40 litre kits	18 kg units - 11.25 litres

SIKAFLOOR® CLEAR COATINGS



PRODUCT	Sikafloor® 359AU Polyurethane coating	Sikafloor® 550PA Polyaspartic coating	Sikafloor® Duraseal Concrete sealer
DESCRIPTION	Polyurethane UV stable resin coating	Abrasion and UV resistant polyaspartic resin coating	Solvent based acrylic clear sealer
CHARACTERISTICS	<ul style="list-style-type: none"> ■ UV stable suitable for external use ■ High chemical and abrasion resistance ■ Quick cure ■ Available in satin or gloss ■ Long pot life ■ Low viscosity ease of application. ■ Application by roller or airless spray ■ Solvent based technology 	<ul style="list-style-type: none"> ■ UV stable ■ Gloss finish ■ Rapid cure ■ Excellent scratch resistance ■ Good chemical and abrasion resistance ■ Application by squeegee/roller 	<ul style="list-style-type: none"> ■ Economical single part product ■ UV stable ■ Satin finish ■ Low viscosity with excellent substrate penetration ■ Good resistance to oils and grease ■ Reduces dusting of concrete floors ■ Application by roller or airless spray
PACKAGING	Part A: 15 litres Part B: 5 litres A+B Kit: 20 litres	Part A: 4 litres Part B: 4 Litres 8 litre Kits Part A: 20 litres Part B: 20 litres 40 litre Kits	20 litres

SIKAFLOOR® CLEAR COATINGS



PRODUCT	Sikafloor® PU Polyurethane coating	Sikafloor® 169 Epoxy coating
DESCRIPTION	UV stabilised clear polyurethane coating	Very low yellowing, transparent epoxy resin
CHARACTERISTICS	<ul style="list-style-type: none"> ■ Contains UV light absorber ■ UV stable ■ Tough and hardwearing ■ Gloss finish ■ Application by roller or airless spray 	<ul style="list-style-type: none"> ■ Good mechanical and abrasion resistance ■ Low yellowing, ideal for internal behind glass UV exposure ■ Ideal for flake flooring and metallic floors ■ Application by squeegee/roller
PACKAGING	20 litres	Part A: 6 kg containers Part B: 2 kg containers Part A+B: 8 kg unipacks

SIKAFLOOR® POLYURETHANE CEMENT FLOORING



PRODUCT	Sikafloor® PurCem 24 Polyurethane cement	Sikafloor® PurCem 21 Polyurethane cement	Sikafloor® PurCem 31 Polyurethane cement coating
DESCRIPTION	Medium to heavy duty textured or smooth, 1.5-3.0 mm polyurethane hybrid floor	Medium to heavy duty, self-smoothing, polyurethane hybrid flooring screed	Water based polyurethane cementitious hybrid coating
CHARACTERISTICS	<ul style="list-style-type: none"> ■ Taint free ■ Exceptional levelling properties down to 1.5 mm thickness ■ Applied between 1.5-3 mm ■ Excellent as a resurfacing product over sound but worn resin floors ■ Ability to receive aggregate broadcast and top coat ■ Can handle up to 10% moisture content in substrates ■ Economical ■ Fast cure and ability to be even faster with addition of PurCem® accelerator ■ Excellent abrasion and chemical resistance ■ Application by pin rake/trowel/spike roller 	<ul style="list-style-type: none"> ■ Taint free ■ Excellent levelling properties ■ Applied between 4-7 mm thick ■ Heavy duty industrial floor topping. ■ Can handle up to 10% moisture content in Substrates ■ Ability to receive aggregate broadcast and topcoat ■ Fast cure and ability to be even faster with addition of PurCem® accelerator ■ Excellent abrasion and chemical resistance especially to organic food matter ■ Excellent thermal shock capabilities. ■ Can withstand very cold and high heat exposure ■ Application by pin rake/trowel/spike roller 	<ul style="list-style-type: none"> ■ Taint free ■ Can handle up to 10% moisture content in substrates ■ Fast cure and ability to be even faster with addition of PurCem® accelerator ■ Excellent abrasion and chemical resistance ■ Low sheen finish ■ Easy to apply ■ Application by squeegee/roller
PACKAGING	Part A (neutral): 2.80 kg plastic container Part B: 3.00 kg plastic container Part C: 9.00 kg plastic bag Part D: Pigment 0.4 kg plastic tub Part A: (neutral)+B+C+D: 15.2 kg (8.5L) ready to mix units	Part A: 2.8 kg plastic pail Pigment: 0.4 kg plastic pail Part B: 3.00 kg plastic jerrycan Part C: 13.8 kg bags 20 kg ready to mix kit Sikafloor® PurCem 21: Part A: 11.2 kg plastic Bucket (1 x unit) Pigment: 0.4 kg plastic pail (4 x Units) Part B: 20 litre Pails (use 50% dose) Part C: 13.8 kg bags (4 x units required) 80 kg Mix (A+B+C+Pigment)	Part A: 1.30 kg plastic bottle Part B: 1.50 kg plastic bottle Part C: 1.60 kg plastic bags Pigment: 0.4 kg Plastic tub Part A+B+C+pigment 4.8 kg ready to mix

SIKAFLOOR® POLYURETHANE CEMENT FLOORING



PRODUCT	Sikafloor® Purcem 33 Polyuretahn cement Coating	Sikafloor® Purcem 29 Coving Mortar
DESCRIPTION	UV stable polyurethane pigmented finish coat for PurCem® HB-22 system	High strength, water-based polyurethane hybrid coving and detailing mortar
CHARACTERISTICS	<ul style="list-style-type: none"> ■ Taint free ■ UV stable ■ Can handle up to 10% moisture content in Substrates ■ Excellent abrasion and chemical resistance ■ Semi-Gloss Finish ■ Application by squeegee/roller 	<ul style="list-style-type: none"> ■ High chemical and abrasion resistance- superior than epoxy for demanding environments ■ Blended aggregates for coving installations ■ High impact resistance ■ Fast curing ■ Taint free ■ Economical ■ Application by radius/flat trowell
PACKAGING	Part A: 1.3 kg Part B: 1.9 kg Part C: 1.6 kg Pigment: 0.4 kg PurCem Accelerator: The addition of Sikafloor® PurCem Accelerator is required for Sikafloor® 33 PurCem: The achieve similar curing to Sikafloor® 31 PurCem® please refer to the below Sikafloor® PurCem Accelerator Addition Guide: 15°C - 200mls/5.2 kg kit 6°C - 300mls/5.2 kg kit 5.2 kg kit: A+B+C+Pigment	Part A: 1.30 kg plastic bottle Part B: 1.50 kg plastic bottle Pigment: 0.4 kg plastic tub Part C: 1.60 kg kg plastic bag Part D: 17.3 kg plastic bag Part A+B+C+D 22 kg ready to mix



SIKAFLOOR® ACCESORIES

Product	Description	Characteristics	Packaging
Sikafloor® 513 Thickening agent for epoxy resins	<ul style="list-style-type: none"> ■ Create epoxy paste from flowable resin ■ Thickening Sikafloor® Coatings if required ■ Thickening agent for Sika Primer systems 	<ul style="list-style-type: none"> ■ Excellent for thickening of epoxy, for non-sag patching or vertical applications ■ Consolidated additive that doesn't become airborne upon handling/ mixing ■ Delivers adaptable viscosity in epoxy resins 	<ul style="list-style-type: none"> ■ 2 kg
Sikafloor® Booster Additive to accelerate cure within epoxy resins	<ul style="list-style-type: none"> ■ As an accelerator for Sikafloor®-160 -161-264 and Sikafloor®-94 ■ As an accelerator for Sikadur® 31-32 and 33 epoxy mortars and pastes 	<ul style="list-style-type: none"> ■ Variable addition rates to suit differing temperatures ■ Used on base coats and not final coats/layers. ■ Delivers capacity for recoats at 2-3 hrs.at 22°C 	<ul style="list-style-type: none"> ■ 5 Litres
Sikafloor® Purcem Accelerator Liquid additive for rapid cure of PurCem products	<ul style="list-style-type: none"> ■ To aid in the speed of cure for Sikafloor® PurCem 	<ul style="list-style-type: none"> ■ Economical ■ Delivers capacity within Purcem® products for recoats at 2-3 hrs. at 22°C 	<ul style="list-style-type: none"> ■ 1 Litre
Sika® Arrowhead Aluminum coving trim	<ul style="list-style-type: none"> ■ Preformed aluminium coving extrusion 	<ul style="list-style-type: none"> ■ Low profile , minimises quantity of fill required for a cove ■ Top rebate for neat installation of joint sealant 	<ul style="list-style-type: none"> ■ 3 M lengths
Sikadur® 506 Blended quartz aggregate	<ul style="list-style-type: none"> ■ 0.3-1.2 mm sized aggregate 	<ul style="list-style-type: none"> ■ Kiln dried aggregate ■ Specially formulated blend of large/medium/ fine aggregates to be used in coving or epoxy mortars. Excellent compaction and finishing results. Eliminates a sticky hard to use epoxy mortar 	<ul style="list-style-type: none"> ■ 20 kg
Sikafloor® Filler Fine quartz aggregate	<ul style="list-style-type: none"> ■ 0.2-0.5 mm sized aggregate 	<ul style="list-style-type: none"> ■ Kiln dried aggregate ■ Proprietary blend of finer sand aggregate for use in levelling and skim layers. ■ Suitable in self-smoothing floors with good aggregate suspension 	<ul style="list-style-type: none"> ■ 15 kg
Sikafloor® B1 Aggregate Heavy duty broadcast aggregate for industrial floors	<ul style="list-style-type: none"> ■ 0.5-1 mm sized aggregate 	<ul style="list-style-type: none"> ■ Excellent accelerated slip test results achieved on broadcast floors ■ Bauxite based aggregate ■ High Hardness results on Mohs scale-superior to quartz 	<ul style="list-style-type: none"> ■ 25 kg

SIKAFLOOR® RESIN SYSTEM

Sikafloor® Systems:	Specifications						
	Thickness	UV Stability	UV Top Coat Option	Green Star	Impact Resistance	Traffic Loads Foot/Vehiclular	Heat Resistance
Sikafloor® Multidur ES 14 High build gloss epoxy coating Typical Sector Usage: Retail, Commercial, Health Care, Data Centres, Aviation, Warehousing	250-350 microns	NO	YES	YES	Light	Foot & Vehicle Traffic	65°C
Sikafloor® Multidur ET 14 High build textured/slip resistant epoxy coating Typical Sector Usage: Car Parks, Engineering, Educational Facilities, Commercial, Defence, Stadium	500-600 microns	NO	YES	YES	Light	Foot & Vehicle Traffic	65°C
Sikafloor® DecoDur ES 26 Flake Decorative flake epoxy coating Typical Sector Usage: Retail, Commercial, Aquatic Centres	1-2 mm	YES	YES	YES	Medium	Foot & Vehicle Traffic	65°C
Sikafloor® Monoflex MB24 Smooth, flaked, polyurethane, crack bridging floor finish Typical Sector Usage: Commercial, Healthcare, Educational, Residential Apartment Complexes	1-2 mm	YES	YES	YES	Light	Foot Only	65°C
Sikafloor® Multidur EB 14 High build Broadcast textured non slip pigmented epoxy floor coating- 1.5-2 mm Typical Sector Usage: Carparks, Workshops, Engineering, Industrial, Stadium	1.5-2 mm	NO	YES	YES	Medium	Foot & Vehicle Traffic	65°C
Sikafloor® DecoDur EB 26 Quartz Decorative, slip resistant, low VOC, coloured quartz floor covering Typical Sector Usage: Retail, Commercial, Aquatic and Sports, Stadium	2-3 mm	YES	YES	YES	Heavy	Foot & Vehicle Traffic	65°C

SIKAFLOOR® RESIN SYSTEM

Sikafloor® Systems:	Specifications						
	Thickness	UV Stability	UV Top Coat Option	Green Star	Impact Resistance	Traffic Loads Foot/Vehiclular	Heat Resistance
Sikafloor® Multidur ES 24 2-4mm Self smoothing gloss epoxy topping Typical Sector Usage: Retail, Commercial, Data Centres, Defence, Healthcare	2-4 mm	NO	YES	YES	Heavy	Foot & Vehicle Traffic	65°C
Sikafloor® Multidur EB 24 High build broadcast textured non slip pigmented epoxy floor coating- 2-4 mm Typical Sector Usage: Defence, Manufacturing, Engineering	2-4 mm	NO	YES	YES	Heavy	Foot & Vehicle Traffic	65°C
Sikafloor® PurCem HB24 Medium duty textured food grade polyurethane cement hybrid flooring system Typical Sector Usage: Food and Beverage Manufacturing, Hospitality, Retail Food Outlets	3-4 mm	NO	YES	YES	Medium - Heavy	Foot & Vehicle Traffic	65°C
Sikafloor® PurCem HB22 Heavy duty textured food grade polyurethane cement hybrid flooring system Typical Sector Usage: Food and Beverage Manufacturing, Cold Storage, Hospitality, Retail Food Outlets	6-9 mm	NO	YES	YES	Heavy	Foot & Vehicle Traffic	Up to 120°C at 9 mm



052022

WE ARE SIKA

Sika is a specialty chemicals company with a leading position in the development and production of systems and products for bonding, sealing, damping, reinforcing and protecting in the building sector and the motor vehicle industry. Sika's product lines feature concrete admixtures, mortars, sealants and adhesives, structural strengthening systems, flooring as well as roofing and waterproofing systems.



Use QR code to find the latest digital version of this brochure
www.sika.com.au

HEAD OFFICE

55 Elizabeth Street
 Wetherill Park, NSW 2164
 P: (02) 9725 1145
 F: (02) 9725 2605

VICTORIA

33 Fiveways Boulevard
 Keysborough, VIC 3173
 P: (03) 9797 0600
 F: (03) 9797 0666

NEW SOUTH WALES

122 Newton Road
 Wetherill Park, NSW 2164
 P: (02) 9725 1700
 F: (02) 9756 5001

SOUTH AUSTRALIA

28 Kenworth Road
 Gepps Cross, SA 5094
 P: (08) 8162 9055
 F: (08) 8162 9009

QUEENSLAND

30 Parker Court
 Pinkenba, QLD 4008
 P: (07) 3633 9222
 F: (07) 3633 9200

SOUTH AUSTRALIA

1-2/28 Maxwell Road
 Para Hills West, SA 5096
 P: (08) 8349 4955
 F: (08) 8349 7061

QUEENSLAND

6 Mackie Way
 Brendale, QLD 4500
 P: (07) 3205 5677
 F: (07) 3633 9200

WESTERN AUSTRALIA

61 Bushland Ridge
 Bibra Lake, WA 6163
 P: (08) 9395 5300
 F: (08) 9395 5399