

## PRODUCT DATA SHEET

# Sika® Anchor-300

anchor fixation through sheet waterproofing membranes

## DESCRIPTION

Sika® Anchor-300 is a hard PVC anchor shaft in grey colour combined with Sikaplan® PVC waterproofing membrane flange in yellow colour.

## USES

Sika® Anchor-300 is used in double-shell tunnel constructions in combination with waterproofing sheet membranes on base of PVC-p to temporary fix the reinforcement of the inner lining to the outer shell, until the secondary concrete or shotcrete lining is cured and self-supporting.

## CHARACTERISTICS / ADVANTAGES

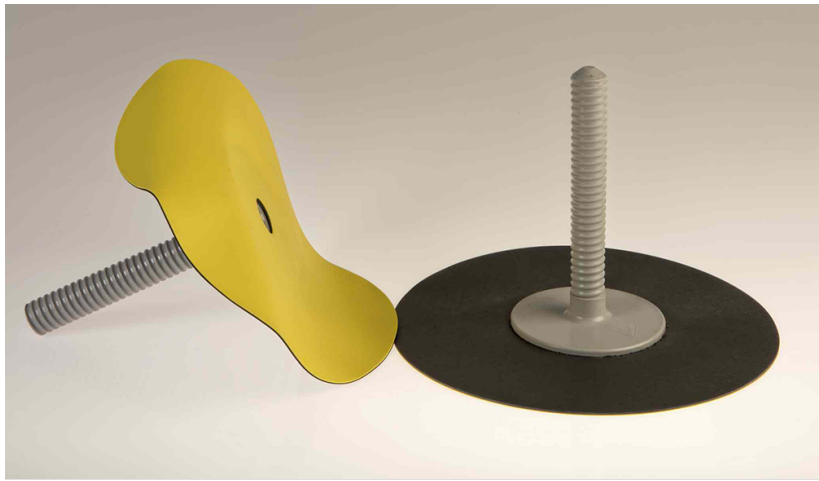
- Allows watertight hot air welded seam with Sikaplan® WP membranes
- Good force transfer through hard PVC shaft
- Waterproofing line around anchor (no additional sealing elements required)
- Anchor steel corrosion-protected
- Quick and simple installation

## APPROVALS / CERTIFICATES

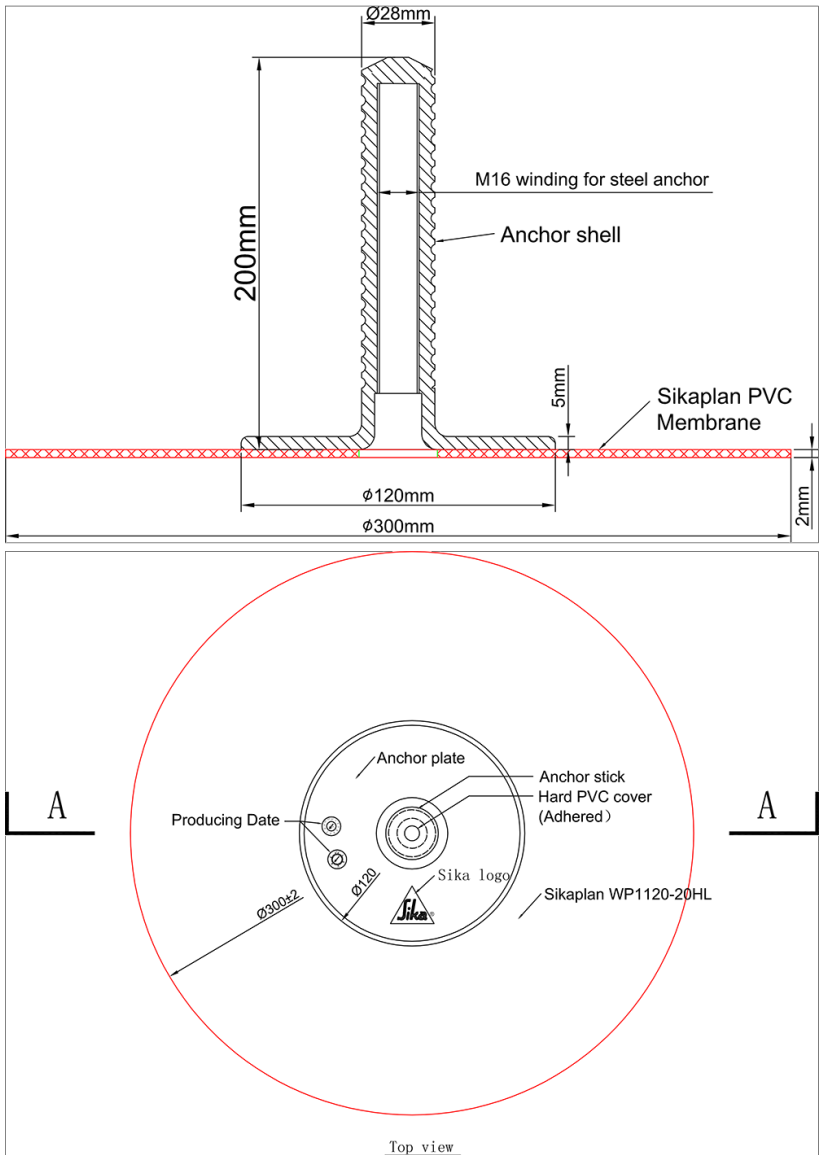
Watertightness test (Vacuum testing):  
-0.2 MPa by Sika Testing System TM 87

## PRODUCT INFORMATION

<b>Packaging</b>	30 pcs per box	
<b>Shelf life</b>	5 years shelf life from date of production if stored properly in undamaged, unopened, original sealed packaging	
<b>Storage conditions</b>	Store in dry conditions, protected from direct sunlight, rain, snow and ice, etc.	
<b>Appearance and colour</b>	PVC Membrane PVC Shaft	yellow and black grey



**Dimensions**



<b>Thickness</b>	Membrane: 2.0 mm
<b>Diameter</b>	Shaft: Inside Thread M16, length 200 mm Membrane: 300 mm

**SYSTEM INFORMATION**

**System structure** Ancillary products:

Product Data Sheet  
Sika® Anchor-300  
April 2023, Version 01.02  
02072080200000014

**BUILDING TRUST**



- Sikaplan® WP 1100 -types
- Sikaplan® WP 1110 -types
- Sikaplan® WP 1120 -types
- Sikaplan® WP 2101 -types
- Sikaplan® WP 2110 -types
- Sikaplan® WP Protection Sheet-Types
- Sikadur® -31
- Sika® AnchorFix®-2

---

## TECHNICAL INFORMATION

---

**Ambient maximum temperature of liquids** + 35 °C max

---

## APPLICATION INFORMATION

---

**Ambient air temperature** Min. +5 °C

---

### BASIS OF PRODUCT DATA

All technical data stated in this Product Data Sheet are based on laboratory tests. Actual measured data may vary due to circumstances beyond our control.

### IMPORTANT CONSIDERATIONS

- Sika® is not responsible for the permissible anchor forces or the related loading calculations.
- Preliminary pull-out tests are mandatory.
- Installation works must only be carried out by Sika® trained contractors.
- The membrane is not UV stabilized and cannot be installed on structures permanently exposed to sunlight and weathering.

### ECOLOGY, HEALTH AND SAFETY

#### REGULATION (EC) NO 1907/2006 - REACH

This product is an article as defined in article 3 of regulation (EC) No 1907/2006 (REACH). It contains no substances which are intended to be released from the article under normal or reasonably foreseeable conditions of use. A safety data sheet following article 31 of the same regulation is not needed to bring the product to the market, to transport or to use it. For safe use follow the instructions given in the product data sheet. Based on our current knowledge, this product does not contain SVHC (substances of very high concern) as listed in Annex XIV of the REACH regulation or on the candidate list published by the European Chemicals Agency in concentrations above 0,1 % (w/w).

### APPLICATION INSTRUCTIONS

#### SUBSTRATE QUALITY

The substrate conditions are as defined for the waterproofing membrane system which is to be combined with the Sika® Anchor-300.

#### APPLICATION METHOD / TOOLS

Installation method:

1. Cut out a small section of the waterproofing system or drill through it directly
2. Drill a hole into the substrate
3. Clean the drill hole with high pressure water jet
4. Clean the drill hole with compressed air
5. Inject Sikadur® -31 or Sika® AnchorFix®-2, or use anchor capsule
6. Install Sika® Anchor-300
7. Weld against Sikaplan® PVC membrane
8. Install steel anchor for temporary fixing of rebar cage

### LOCAL RESTRICTIONS

Please note that as a result of specific local regulations the declared data for this product may vary from country to country. Please consult the local Product Data Sheet for the exact product data.

## LEGAL NOTES

The information, and, in particular, the recommendations relating to the application and end-use of Sika products, are given in good faith based on Sika's current knowledge and experience of the products when properly stored, handled and applied under normal conditions in accordance with Sika's recommendations. In practice, the differences in materials, substrates and actual site conditions are such that no warranty in respect of merchantability or of fitness for a particular purpose, nor any liability arising out of any legal relationship whatsoever, can be inferred either from this information, or from any written recommendations, or from any other advice offered. The user of the product must test the product's suitability for the intended application and purpose. Sika reserves the right to change the properties of its products. The proprietary rights of third parties must be observed. All orders are accepted subject to our current terms of sale and delivery. Users must always refer to the most recent issue of the local Product Data Sheet for the product concerned, copies of which will be supplied on request.

**Sika Australia Pty Limited**

ABN 12 001 342 329

aus.sika.com

Tel: 1300 22 33 48

**Product Data Sheet**

Sika® Anchor-300

April 2023, Version 01.02

020720802000000014

SikaAnchor-300-en-AU-(04-2023)-1-2.pdf

