

PRODUCT DATA SHEET

SikaRoof® VersiScape Panel Reinforced

SAFETY PANEL FOR RAISED LANDSCAPE FINISHES

DESCRIPTION

SikaRoof® VersiScape Panel Reinforced is a safety panel for use with SikaRoof® VersiJack® to provide a raised substructure with the strength and stability to create customisable paver layout designs and act as a safety net in case of accidental paver breakage. The safety panels are manufactured from recycled polypropylene (PP), while the reinforcements are manufactured from aluminium. These reinforcement bars are placed into four slots on the underside of the safety panel.

The safety panels construct a levelled surface that accommodates different landscape finishes, from 20 mm ceramic pavers of varying sizes to artificial grass.

USES

Safety panel for raised flooring for podiums, balconies and roof terraces. The safety panel may be used to raise conventional 600 x 600 mm pavers, pavers of varying sizes, artificial grass, or a combination of the three.

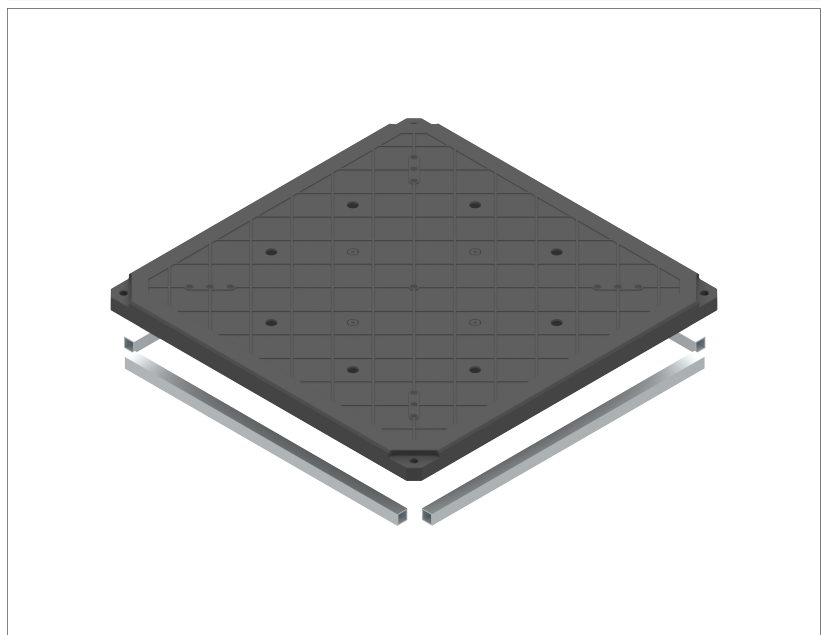
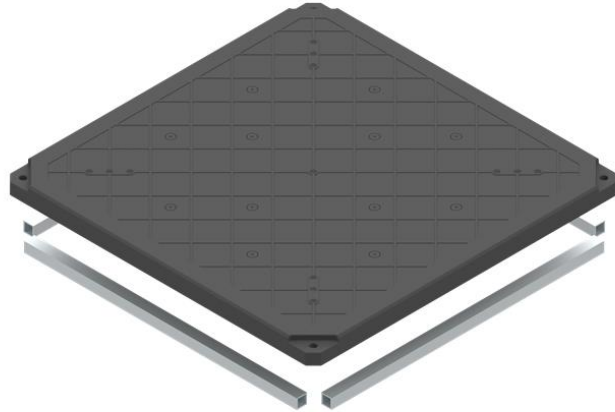
FEATURES

- Flexibility in finishes design
- Recyclable components
- Resistant to biological attack by moulds and algae
- Chemically resistant to acids, alkalis, oil and soil chemicals
- Operates within a wide service temperature range

PRODUCT INFORMATION

Packaging

- SikaRoof® VersiScape Panel Reinforced: 4 pieces / bundle
- SikaRoof® VersiScape Panel Reinforced 8 Holes: 4 pieces / bundle



Shelf life	No expiration date if the product is stored in accordance to the storage conditions as stated in this Product Data Sheet	
Storage conditions	Bundles must be stored in their original packing, laid in a horizontal position, and under cool and dry conditions. The product must be protected from direct sunlight, rain, snow and ice, and any other elements	
Dimensions	600 x 600 x 32 mm	
Weight	3.25 kg / panel	
TECHNICAL INFORMATION		
Compressive strength	Allowable Distributed Loads	5 kN/m ²
	Point Load	
	- Ø300 mm in centre - 150x150 mm w centre pedestal	580 kg 550 kg @ 9mm deflection
Service temperature	- 30 °C to 80 °C	

BASIS OF PRODUCT DATA

All technical data stated in this Product Data Sheet are based on laboratory tests. Actual measured data may vary due to circumstances beyond our control.

IMPORTANT CONSIDERATIONS

- SikaRoof® VersiScape Panel Reinforced is not resistant to permanent weathering and UV exposure. For more information, please contact Sika Sales Personnel.

ECOLOGY, HEALTH AND SAFETY

This product is an article as defined in article 3 of regulation (EC) No 1907/2006 (REACH). It contains no substances which are intended to be released from the article under normal or reasonably foreseeable conditions of use. A safety data sheet following article 31 of the same regulation is not needed to bring the product to the market, to transport or to use it. For safe use follow the instructions given in the product data sheet. Based on our current knowledge, this product does not contain SVHC (substances of very high concern) as listed in Annex XIV of the REACH regulation or on the candidate list published by the European Chemicals Agency in concentrations above 0,1 % (w/w).

APPLICATION INSTRUCTIONS

SUBSTRATE PREPARATION

Clean and sound surface shall have at least a wood float finish. All holes, joints, and cracks and honeycombs in concrete or masonry surfaces shall be filled with an approved grout and allowed to cure. High spots in concrete or masonry surfaces shall be cut off or ground down to prevent damage/puncture to the pedestal base.

APPLICATION

SikaRoof® VersiScape Panel Reinforced shall be loosely laid without any mechanical fixing on top SikaRoof® VersiJack®. For fastened application, the panel may be screwed to the pedestal at allocated pilot screw features with approved screws. The first panel and paver shall be installed to the correct elevation followed by levelling with a levelling device, to serve as a reference. Subsequent panels and pavers shall be installed and checked to ensure consistent and correct elevation, till a sturdy and rigid raised flooring is obtained, free of rattling, squeaking or other noises.

Sika Australia Pty Limited

ABN 12 001 342 329

aus.sika.com

Tel: 1300 22 33 48

LEGAL NOTES

The information, and, in particular, the recommendations relating to the application and end-use of Sika products, are given in good faith based on Sika's current knowledge and experience of the products when properly stored, handled and applied under normal conditions in accordance with Sika's recommendations. In practice, the differences in materials, substrates and actual site conditions are such that no warranty in respect of merchantability or of fitness for a particular purpose, nor any liability arising out of any legal relationship whatsoever, can be inferred either from this information, or from any written recommendations, or from any other advice offered. The user of the product must test the product's suitability for the intended application and purpose. Sika reserves the right to change the properties of its products. The proprietary rights of third parties must be observed. All orders are accepted subject to our current terms of sale and delivery. Users must always refer to the most recent issue of the local Product Data Sheet for the product concerned, copies of which will be supplied on request.

SikaRoofVersiScapePanelReinforced-en-AU-(05-2026)-1-1.pdf

Product Data Sheet

SikaRoof® VersiScape Panel Reinforced

May 2026, Version 01.01

020945051990244854